



# FUSION

**LOVE**  
CERAMIC TILES



# FUSION

BEYOND  
CERAMIC-TILES...

Fusion.  
Symbiosis between two worlds.  
Sublime union of spaces and lives.  
Forms.

Fusion.  
Symbiose entre deux mondes.  
Union Sublime d'espaces et vies.  
Formes.

Fusion.  
Simbiose entre 2 mundos.  
União sublime de espaços e vidas.  
Formas.

Fusion.  
Симбиоз между двумя мирами.  
Союз возвышенного пространства и жизни.  
Формы.

**LOVE**  
CERAMIC TILES

**COLOUR**  
RANGE  
15x75

GREY

TORTORA

WHITE

BEIGE

BROWN



**BEIGE** FUSION BEIGE  
LIVING ROOM 15x75



**BEIGE** FUSION BEIGE  
15x75



#7

**LOVE**  
CERAMIC TILES

**FUSION**

# TORTORA

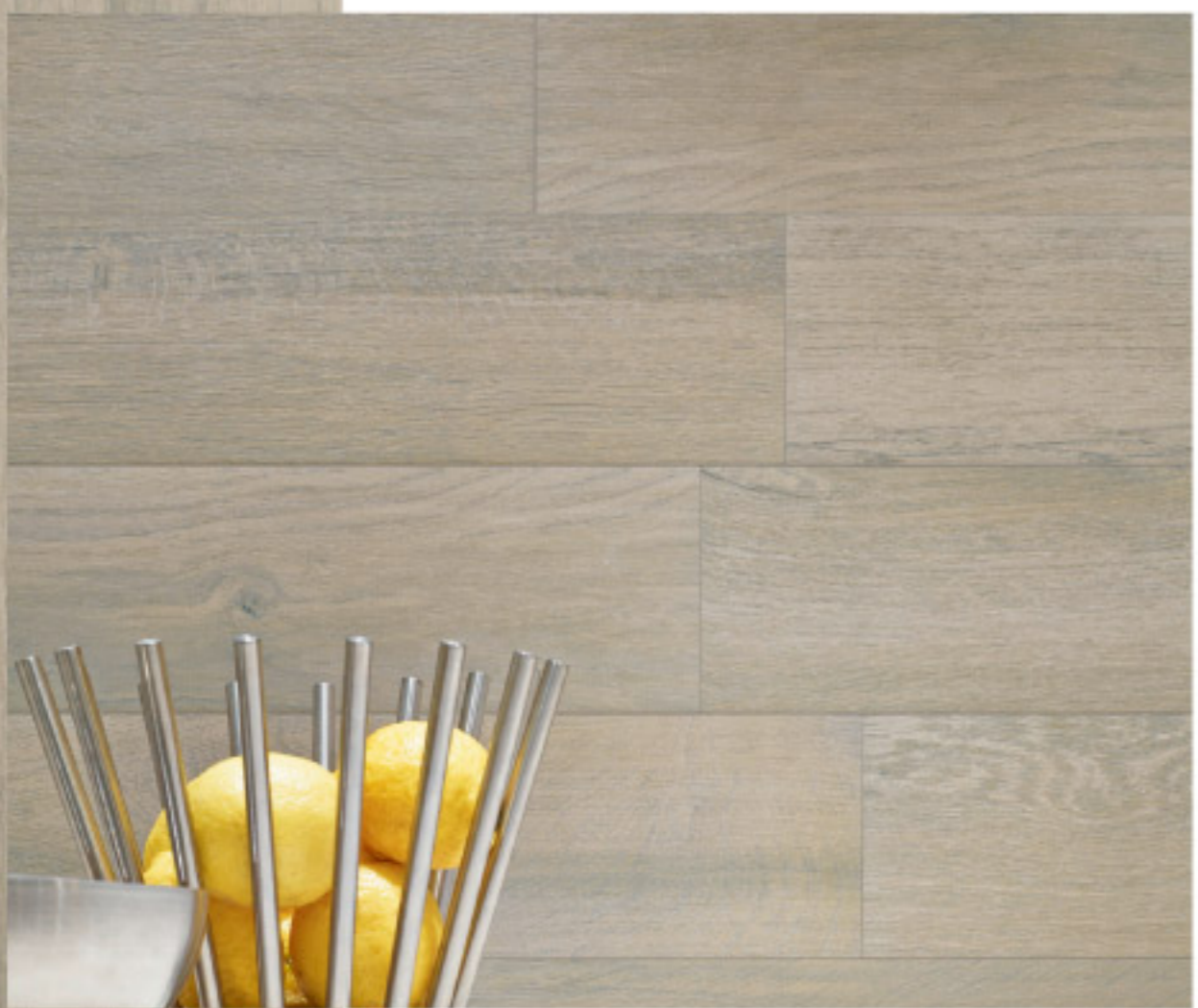
FUSION TORTORA  
15x75

## KITCHEN



# TORTORA

FUSION TORTORA  
15x75



FUSION

LOVE  
CERAMIC TILES



# BROWN BEDROOM

FUSION BROWN  
15x75



**LOVE**  
CERAMIC TILES





# BROWN

FUSION BROWN  
15x75



#15

**LOVE**  
CERAMIC TILES

**FUSION**

**WHITE**  
HOME OFFICE

FUSION WHITE  
15x75



**WHITE**

FUSION WHITE  
15x75



#19

FUSION

**LOVE**  
CERAMIC TILES

# GREY TERRACE

FUSION GREY ANTI-SLIP  
15x75



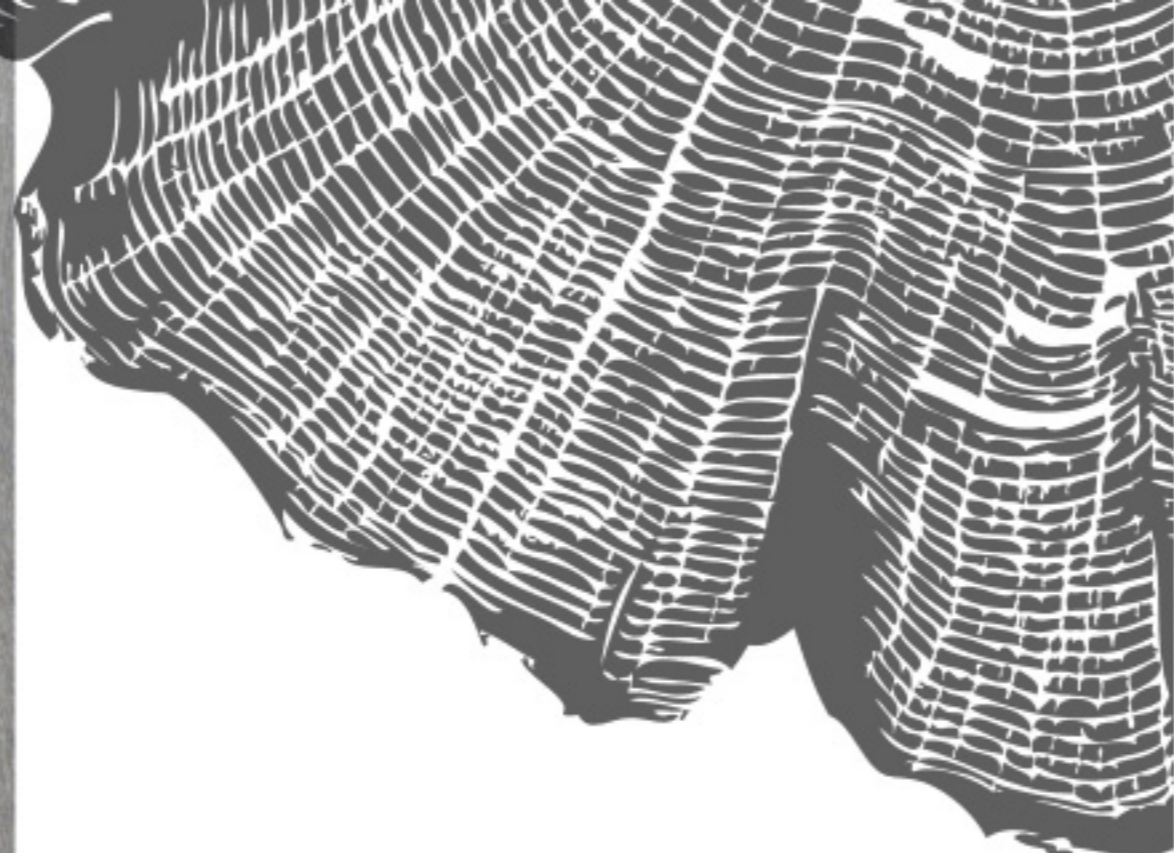
**LOVE**  
CERAMIC TILES



#21

**GREY**

FUSION GREY ANTI-SLIP  
15x75



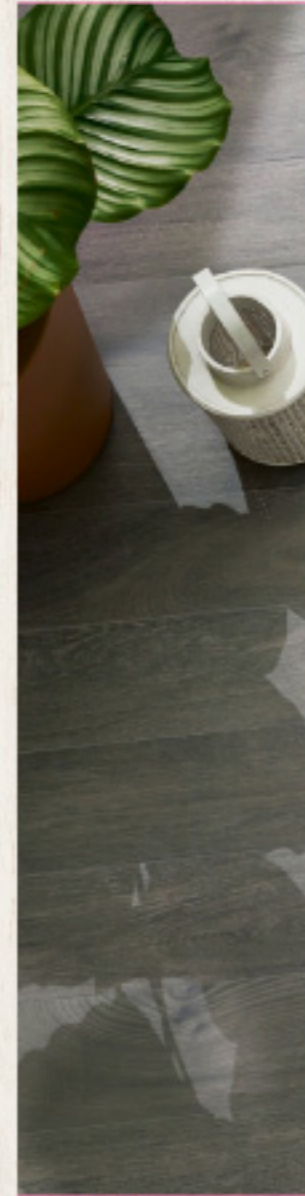
#25

**LOVE**  
CERAMIC TILES

**FUSION**

FUSION

DETAILS THAT CHANGE YOUR LIFE



**FUSION** 15x75

COLOURS • CORES • COULEURS • ЦВЕТА



RANDOM ART



**LOVE**  
CERAMIC TILES



LAYING SUGGESTIONS  
SUGESTÕES DE APLICAÇÃO  
SUGGESTIONS DE POSE  
ТЕХНОЛОГИЯ И СПОСОБЫ УКЛАДКИ

**GREY**



**FUSION GREY**  
15x75



**INTERFUSION GREY**  
15x50



**FUSION GREY ANTI-SLIP**  
15x75

**TORTORA**



**FUSION TORTORA**  
15x75



**INTERFUSION TORTORA**  
15x50



**FUSION TORTORA ANTI-SLIP**  
15x75

**WHITE**



**FUSION WHITE**  
15x75



**INTERFUSION WHITE**  
15x50



**FUSION WHITE ANTI-SLIP**  
15x75

**BEIGE**



**FUSION BEIGE**  
15x75



**INTERFUSION BEIGE**  
15x50



**FUSION BEIGE ANTI-SLIP**  
15x75

**BROWN**



**FUSION BROWN**  
15x75



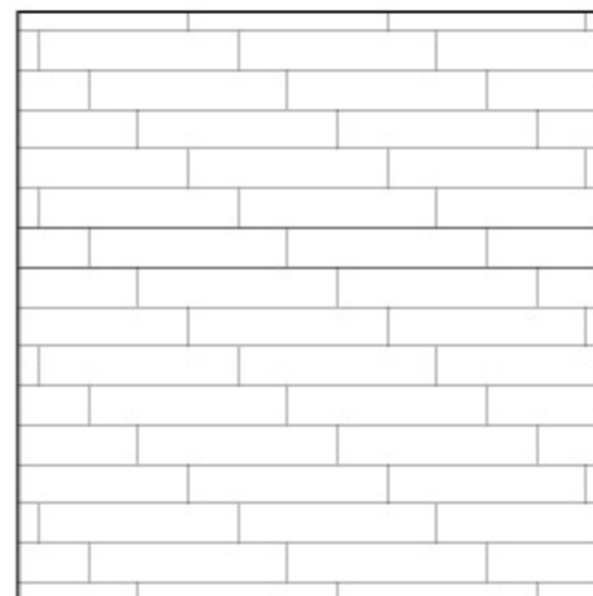
**INTERFUSION BROWN**  
15x50



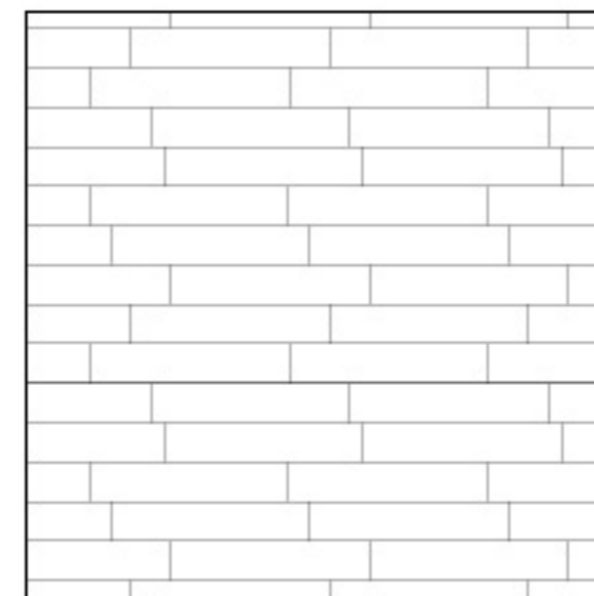
**FUSION BROWN ANTI-SLIP**  
15x75



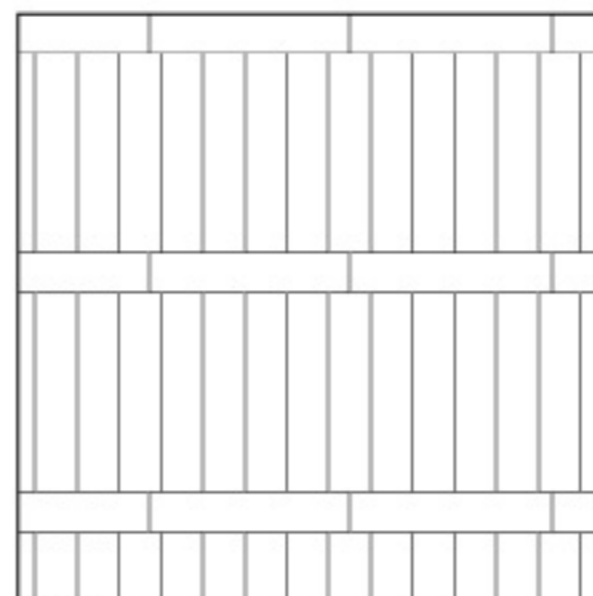
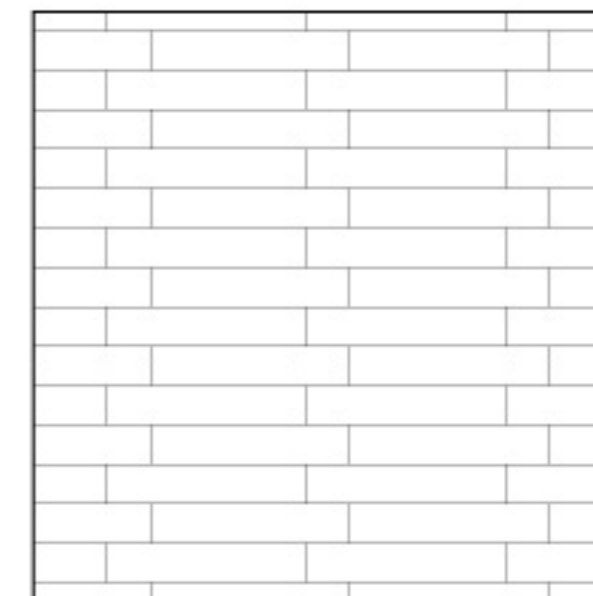
**RODAPÉ FUSION 8x50**



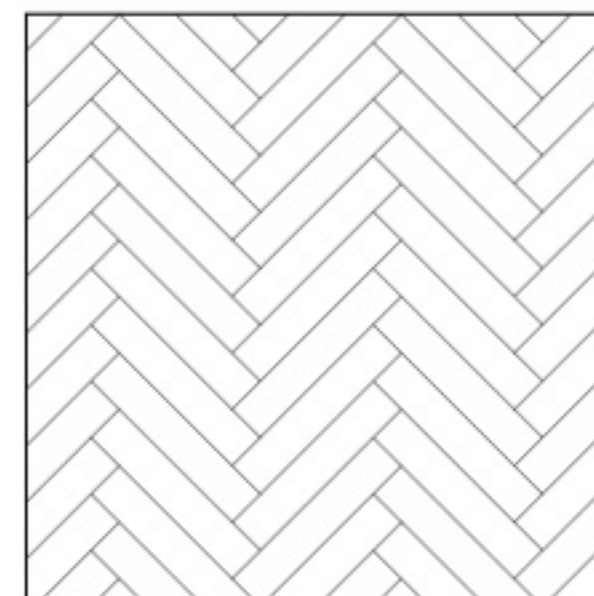
PAQ. 9



PAQ. 5



PAQ. 21



PAQ. 13 & 17



# FUSION

PACKING • EMBALAGEM • EMBALLAGE • VERPACKUNG • УПАКОВКА

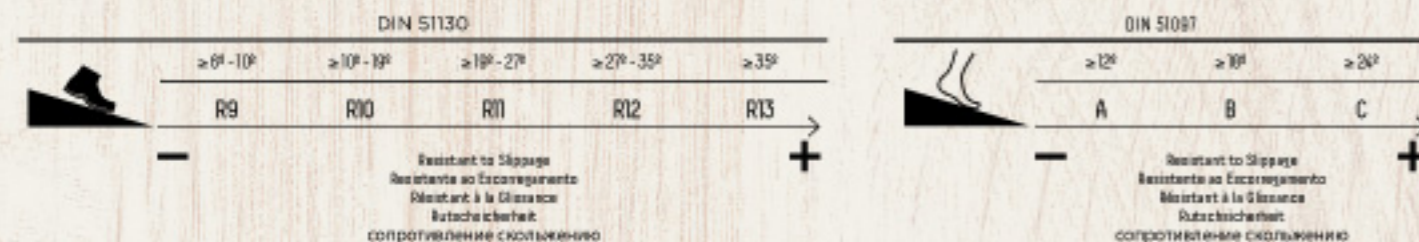
Size Formato Format Format Размер	Product Produto Produit Produkt Продукт	Thickness Espessura Épaisseur Dicke Толщина	Pcs/m <sup>2</sup> Pecas/m <sup>2</sup> Pcs/m <sup>2</sup> STK/m <sup>2</sup> Шт/м <sup>2</sup>	Weight/m <sup>2</sup> Peso/m <sup>2</sup> Poids/m <sup>2</sup> Gewicht/m <sup>2</sup> Вес/м <sup>2</sup>	Pz x	m <sup>2</sup> x	Kg x	x	m <sup>2</sup> x	Kg x	x	A x B x C cm
15x75	Porcelain Glazed Floor Tiles Porcelanato Vidrado Grés Cérame Émailé Fazitsteinzeug Glasiert Bodenfliesen лазурований керамогранитный плитку	9 mm	0,89	20,43 Kg	10	1,13 m <sup>2</sup>	23,10 Kg	55	62,15 m <sup>2</sup>	1,295 Kg		80x120x90cm

SYMBOLS • SIMBOLOGIA • SYMBOLES • ZEICHEN • СИМВОЛИКА

	Floor and Wall Tiles Pavimento e Revestimento Faïences et Carreaux Sol Wandfliesen und Bodenfliesen Плитка облицовочная и напольная		Product with Different Graphics and Shades Produto com Efeitos e Tonalidades Diferentes Produit avec une Sémiologie et une Teinte Différente Produkt mit verschiedener Grafik und Tönung Модели Различной Текстуры И Оттенков		Thickness Espessura Épaisseur Dicke толщина
	Non-Slippery (DIN 51130) Anti-Derrapante (DIN 51130) Antiriscivante (DIN 51130) Rutschfest (DIN 51130) противоскользящий (DIN 51130)		Non-Slippery (DIN 51130) Anti-Derrapante (DIN 51130) Antiriscivante (DIN 51130) Rutschfest (DIN 51130) противоскользящий (DIN 51130)		



NON-SLIPPERY • ANTI-DERRAPANTE • ANTIDÉRAPANT • RUTSCHFEST • ПРОТИВОСКОльзяЩИЙ



CREATIVE DEVELOPMENT:  
DESENVOLVIMENTO CRIATIVO:

UNIVERSIDADE  
DE AVEIRO

Tiago Santos  
Emanuel Oliveira  
Cristina Fernandes

COLABORAÇÃO:

Matilde Sérgio  
Juca

COORDENAÇÃO:

Marketing Love Ceramic Tiles

DESIGN E PRODUÇÃO:

Viriato & Viriato, julho 2013

# FUSION

BEYOND  
CERAMIC TILES...

# LOVE

CERAMIC TILES

© COPYRIGHT GRÉS PANAREA PORTUGAL S.A.

ALL RIGHTS RESERVED. THE PRODUCTS AND BRANDS MENTIONED OR REPRESENTED IN THIS CATALOGUE ARE PROPERTY OF GRÉS PANAREA PORTUGAL, S.A. ALL BRANDS, DRAWINGS, PHOTOGRAPHS AND TEXTS ARE PROTECTED BY LAW. IT IS STRICTLY PROHIBITED TO COPY, REPRODUCE OR MODIFY IN ITS WHOLE OR PARTIALLY ANY ELEMENT INHERENT TO THE REPRESENTATION OF THE BRANDS, NAMELY WORDS, SYMBOLS, COLOURS OR OTHERS, AS WELL AS LOGOTYPES, DRAWINGS, CATALOGUE LAYOUT, DESIGN ATMOSPHERES OR DECORATION GRAPHICALLY REPRESENTED IN THE CATALOGUE, WITHOUT PRIOR WRITTEN CONSENT OF GRÉS PANAREA PORTUGAL. THE INFRINGEMENT OF THE DISPOSITIONS DEFINED IN THIS DECLARATION MAY RESULT IN THE CIVIL AND CRIMINAL RESPONSIBILITY OF THE INFRINGER.

OS PRODUTOS E MARCAS REFERIDOS OU REPRESENTADOS NESTE CATALOGO SÃO PROPRIEDADE DA GRÉS PANAREA PORTUGAL, S.A. ESTANDO AS MARCAS, DESENHOS, FOTOGRAFIAS OU TEXTOS DEVIDAMENTE PROTEGIDOS POR LEI E EXPRESSAMENTE PROIBIDA A CÓPIA, REPRODUÇÃO, ALTERAÇÃO, NO TODO OU EM PARTE, DE QUALQUER ELEMENTO CONSTITUTIVO OU REPRESENTATIVO DAS MARCAS, DESIGNADAMENTE PALAVRAS, SÍMBOLOS, CORES OU OUTROS, SEM COMO DOS LOGÓTIPOS, DESENHOS, LAYOUTS DE CATALOGO, AMBIENTES DE DESIGN OU DECORAÇÃO NELE REPRESENTADOS GRÁFICAMENTE, SEM AUTORIZAÇÃO ESCRITA DA GRÉS PANAREA PORTUGAL, S.A. A VIOLAÇÃO DE ALGUMA DAS DISPOSIÇÕES PREVISTAS NESTA DECLARAÇÃO PODERÁ ACARREAR RESPONSABILIZAÇÃO CIVIL E CRIMINAL DO INFRATOR.

LES PRODUITS ET LES MARQUES MENTIONNÉS OU REPRÉSENTÉS DANS CE CATALOGUE SONT LA PROPRIÉTÉ DE ENTREPRISE GRÉS PANAREA PORTUGAL, S.A. LES MARQUES, LES DESSINS, LES PHOTOGRAPHIES OU LES TEXTES SONT PROTÉGÉS PAR LA LOI. TOUTE REPRODUCTION, REPRODUCTION OU MODIFICATION PARTIELLE OU TOTALE DE MOTS, SYMBOLES, COULEURS OU AUTRES ÉLÉMENTS TOUT COMME LES LOGOTYPES, DESINS, MISE EN PAGE DES CATALOGUES, AMBIANCES DE DESIGN OU DECORATION REPRÉSENTÉS AU NIVEAU GRAPHIQUE, SONT STRICTEMENT INTERDITES, SAUF SUR AUTORISATION ÉCRITE AU PRÉALABLE DE L'ENTREPRISE GRÉS PANAREA PORTUGAL, S.A. LA VIOLATION D'UNE DE CES DISPOSITIONS PRÉVUES DANS CETTE DÉCLARATION PEUT ÊTRE LA RESPONSABILITÉ CIVILE ET CRIMINELLE DU TRANSGRESSEUR.

ПРОДУКТЫ И БРЕНДЫ УПОМЯНУТЫ ИЛИ ПРЕДСТАВЛЕННЫ В ДАННОМ КАТАЛОГЕ, ЯВЛЯЮТСЯ СОБСТВЕННОСТЬЮ GRÉS PANAREA PORTUGAL, S.A. ФИРМЕННЫЕ МАРКИ, РИСУНКИ, ФОТОГРАФИИ ИЛИ ТЕКСТЫ НАДЛЕЖАЮЩИ ЗАЩИТОЙ ЗАКОНОМ. ЗАПРЕЩАЕТСЯ КОПИРОВАНИЕ, ПОДРАЖАНИЕ, ПОПЫТКА ПОЛНОСТЬЮ ИЛИ ЧАСТИЧНО, ЛЮБОГО СОСТАВЛЯЮЩЕГО ЭЛЕМЕНТА ФИРМЕННЫХ МАРК, В ТОМ ЧИСЛЕ СЛОВ, СИМВОЛОВ, ЦВЕТОВ И ДРУГОГО, А ТАКЖЕ ЛОГОТИПОВ, РИСУНКОВ, МАКЕТА КАТАЛОГА, ЕГО ДЕКРАТИВНОГО ДИЗАЙНА И СООТВЕТСТВУЮЩИХ ГРАФИЧЕСКИХ ДЕКОРАТИВНЫХ ЭЛЕМЕНТОВ, БЕЗ ПИСЬМЕННОГО РАЗРЕШЕНИЯ GRÉS PANAREA PORTUGAL, S.A.. НАРУШЕНИЕ ЛЮБОГО ИЗ ПОЛОЖЕНИЙ ЭТОГО ЗАЯВЛЕНИЯ МОЖЕТ ПРИБЛИТИ К ГРАЖДАНСКОЙ И УГОЛОВНОЙ ОТВЕТСТВЕННОСТИ ПРАВОНАРУШИТЕЛЯ.

# LOVE

CERAMIC TILES



**LOVE**  
CERAMIC TILES

Zona Industrial de Aveiro  
3801-101 AVEIRO . PORTUGAL

T. (+351) 234 30 30 30  
F. (+351) 234 30 30 31  
lovetiles@lovetiles.com  
www.lovetiles.com

